

TATA STEEL



Colorcoat HPS200 Ultra™

Super durable, ultimate in performance

Unrivalled product performance

Exceptional performance

Designed to withstand even the most demanding and aggressive environments, Colorcoat HPS200 Ultra™ pre-finished steel provides super durability and corrosion resistance. Whatever your type of building, from warehouses, retail outlets to processing plants, Colorcoat HPS200 Ultra™ demonstrates proven performance and reliability.

Typical properties

Colorcoat HPS200 Ultra™		Test standard	
Nominal organic coating thickness	(µm)*	200	EN 13523-1
Specular gloss (60°):	%	20-40	EN 13523-2
Scratch resistance	(g)	>5000	EN 13523-12
Abrasion resistance (Taber, 250 rev, 1 kg)	(mg)	<12	EN 13523-16
Flexibility:			
Minimum bend radius	(T)	0T (16°C) 1T (0°C)	EN 13523-7 EN 13523-7
Reverse impact	(J)	≥18	EN 13523-5
Adhesion (cross hatch)	(%)	100	EN 13523-6
Maximum continuous operating temperature	(°C)	60	
Corrosion resistance:			
Salt spray	(h)	1000	EN 13523-8
Humidity	(h)	1500	EN 13523-26
Corrosion resistance category		RC5	EN 10169
UV resistance category		Ruv4	EN 10169
Internal environment classification		CPI5	EN 10169

*µm = micron

Notes

1. The figures contained in this table are typical properties and do not constitute a specification. Tested in accordance with EN 13523. For details on test methods visit www.colorcoat-online.com
2. For health and safety datasheets contact Tata Steel.

Super durability

Colorcoat HPS200 Ultra™ has been developed to perform in demanding environments – both external and internal. It has been subjected to comprehensive natural and accelerated testing, often way beyond the required standards. Colorcoat HPS200 Ultra™ is used in a wide range of industrial and commercial buildings and real-life scenarios provide further evidence of the product's super durable qualities.

Excellent test results mean that Colorcoat HPS200 Ultra™ is classified as a CPI5 product as per EN 10169. This is the highest classified level of corrosion protection for internal environments and means that Colorcoat HPS200 Ultra™ is suitable for the most demanding internal applications such as swimming pools, sewage treatment plants, power stations, energy from waste and processing factories.

Today's superdurable Colorcoat HPS200 Ultra™ offers a sustainable, super durable solution for the building envelope where longevity and durability are imperative.

Double sided option

To support the super durable qualities of Colorcoat HPS200 Ultra™ it is provided with a high performance backing coat as standard however is also available double sided. This provides a robust barrier on the reverse side of the steel substrate for buildings with demanding internal and external environments such as manufacturing plants.

Unrivalled corrosion protection

Colorcoat HPS200 Ultra™ uses the unique and proven Galvalloy® metallic coating by Tata Steel. Galvalloy® is made with a special mix of 95% Zinc (Zn) and 5% Aluminium (Al) that conforms to EN 10346:2015. The carefully developed proportions of Zinc and Aluminium in Galvalloy® offers a combination of increased barrier and sacrificial protection when compared with conventional Hot Dip Galv (HDG) coatings and provides unrivalled corrosion protection, even at the cut edges.



Colorcoat HPS200 Ultra™ with Galvalloy® roof after 7 years.



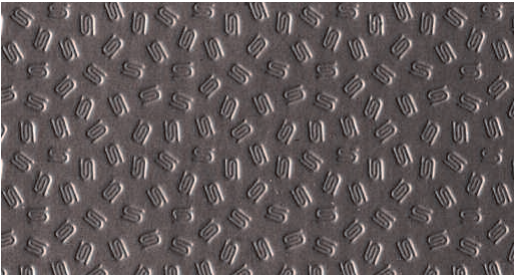
Leathergrain alternative on hot dip galvanised steel substrate roof after 7 years.

Enduring quality

Scintilla™

Unique to Colorcoat HPS200 Ultra™ the Scintilla™ emboss has been developed with a depth of only nominal 50 microns, which makes it less likely to trap dirt than deeper leathergrain embosses therefore making the pre-finished steel easier to clean whilst being more robust.

Unlike leathergrain patterns the emboss is subtle and does not detract from the overall appearance of the building, looking smooth and creating a modern building appearance from a distance. The Scintilla™ emboss provides a unique guarantee of authenticity and an overall thicker protective top coat from Tata Steel.



External fire performance for roof covering products

Colorcoat HPS200 Ultra™ when used as a roof covering can be classed as B_{ROOF}(t1), B_{ROOF}(t2), and B_{ROOF}(t3) without further testing, in accordance with Commission Decision 2005/403/EC for all material greater than or equal to 0.4mm gauge and for all colours in the product range for single sided and 200/100 product.

Colorcoat HPS200 Ultra® has been tested to EN 1187 test method 4 and can be classified according to EN 13501-5 as B_{ROOF}(t4) for all material greater than or equal to 0.4mm gauge and for all colours in the product range for all single and double sided products.

Reaction to fire performance

Colorcoat HPS200 Ultra® has been tested to EN 13823 and EN 11925-2 and can be classified in accordance with EN 13501-1 as C-s2, d0. This classification is valid for material ≥ 0.46mm and for all colours on the colour card for single sided product.

Made in the UK

Colorcoat HPS200 Ultra™ is exclusively from Tata Steel, and is fully traceable with certification to BES 6001 for Responsible Sourcing. From steel manufacture to processing, Colorcoat HPS200 Ultra™ uses some of the most advanced, and sustainable, technologies in the UK for high quality pre-finished steel building products.



Specification

To secure the peace of mind that comes from a rigorously manufactured and world wide tested product from Tata Steel, please ensure Colorcoat® as well as the individual product name is specified: Colorcoat HPS200 Ultra™ by Tata Steel with Galvalloy® metallic coating.

British Board of Agrément Certificate

The long-term performance of Colorcoat HPS200 Ultra™ has been recognised within BBA certificate 91/2717 as “Colorcoat HPS200 Ultra™ coating and metal treatment will protect the steel substrate against corrosion for a period in excess of 40 years in normal industrial, urban, suburban and rural environments in the UK.”



Product warranty

Tata Steel can provide a warranty on a project by project basis for standard roof and wall cladding applications upon completion of a statement of performance application form. The factors which influence the warranty period are geographic location, colour choice, the building environment and use and whether the application is roof or wall.

Please contact Tata Steel for more information about specific warranty periods and conditions before selecting colours for your location.

Sustainability and services

Sustainability

At Tata Steel we are committed to making the products society needs and to making them in the most responsible way.

Our commitment to sustainability also means we actively manage our impacts and contribution throughout the full life of our products – with our suppliers, within our own operations, through the supply chains we serve and by taking responsibility for recycling steel. Colorcoat HPS200 Ultra™ has achieved BES 6001 responsible sourcing certificate which reinforces our commitment to sustainability.

Life Cycle Assessment

We constantly strive to ensure that the manufacturing processes and materials used to manufacture Colorcoat HPS200 Ultra™ are the most sustainable available. Moreover, the enhanced robustness and durability of Colorcoat HPS200 Ultra™ mean that it significantly outperforms other pre-finished steel in terms of environmental impacts over the full life cycle.

Recycling

Colorcoat HPS200 Ultra™ is truly recyclable without any loss of quality, time after time. There is a well established and very efficient steel recycling infrastructure which ensures that all steel collected at end of life goes back into steel manufacture.

Through this efficient recycling of steel, the environmental investment in steel-making is never wasted, making steel the most sustainable construction material.

Environmental Product Declaration (EPD)

Tata Steel have published an Environmental Product Declaration (EPD) for Colorcoat HPS200 Ultra® that complies with EN 15804 and ISO 14025. Please visit www.colorcoat-online.com/epd for further details.

BS & RAL reference table

Colour	BS	RAL
Alaska Grey		7000
Albatross	18B17	240 80 05
Anthracite		7016
Ardenne		7022
Black	00E53	9005
Goosewing Grey	10A05	7038
Hamlet		9002
Honesty	10C31	1015
Ice Blue		230 80 10
Marlstone	10B15	1013
Meadowland	12B17	100 80 20
Merlin Grey	18B25	180 40 05
Mole Brown		070 40 10
Moorland Green	12B21	100 60 20
Mushroom	10B19	080 70 10
Olive Green	12B27	100 30 20
Pure Grey		000 55 00
Straw		080 70 30
Svelte Grey	10B23	080 50 20
White	00E55	9003

RAL references

4 digit numbers are RAL Classic references.

7 digit numbers are RAL Design references.

British Standard or RAL reference numbers shown in the table, represent the nearest colours and are not exact matches to Colorcoat HPS200 Ultra™.

Colorcoat® services

The Colorcoat® brand is recognised as the exclusive mark of quality and metal envelope expertise and is supported by a comprehensive range of services, technical advice and guidance.

Colorcoat HPS200 Ultra™

Colorcoat HPS200 Ultra™ pre-finished steel provides exceptional performance and corrosion resistance for building envelope applications. It is backed up with even more extreme testing and real world global data to demonstrate the best combination of excellent colour stability, gloss retention and outstanding durability.

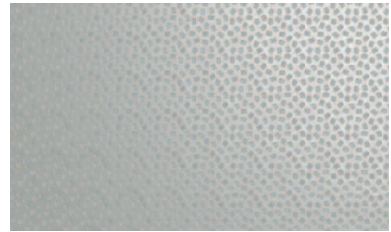
Product features and benefits

- Optimised Galvalloy® metallic coating for exceptional corrosion resistance and cut edge protection.
- Surpasses requirements of Ruv4 and RC5 as per EN 10169 proving excellent colour and gloss retention and corrosion resistance.
- Scintilla™ embossed as a mark of authenticity from Tata Steel.
- Made in the UK and certified to BES 6001 Responsible Sourcing standard.
- Exceeds requirements of CPI5 as per EN 10169 demonstrating excellent barrier properties when used internally.
- Independently tested for liberation of volatile organic compounds (VOC) against EN ISO 16000-9 and achieved an A+ rating.
- Fully REACH compliant & free of chromates including hexavalent chrome.
- BBA certified for durability in excess of 40 years.
- Fully recyclable.
- Available with project based warranty on a case by case basis upon completion of a statement of performance application form.

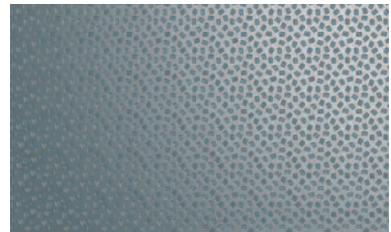
Signature colours



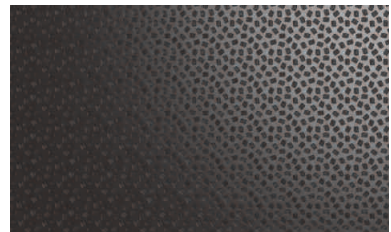
White (RAL 9003)



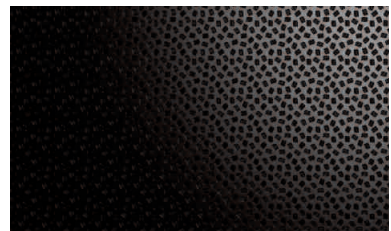
Goosewing Grey (RAL 7038)



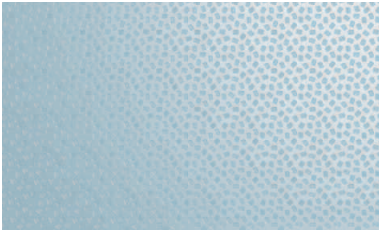
Alaska Grey (RAL 7000)



Anthracite (RAL 7016)



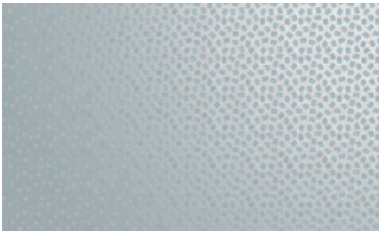
Black (RAL 9005)



Ice Blue (RAL 230 80 10)



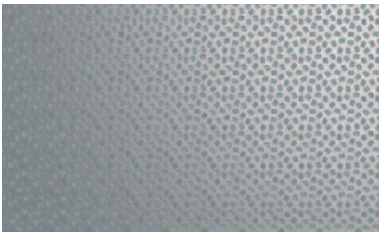
Marlstone (RAL 1013)



Albatross (RAL 240 80 05)



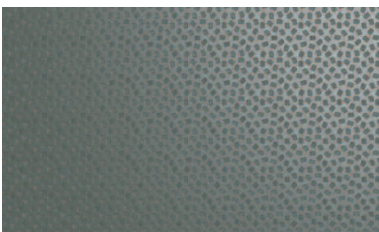
Honesty (RAL 1015)



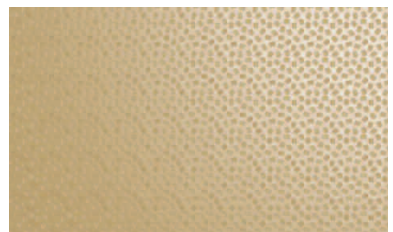
Pure Grey (RAL 000 55 00)



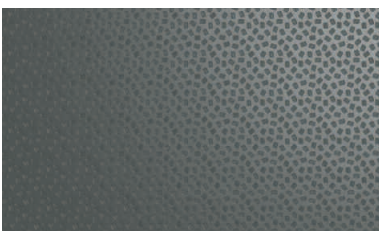
Mushroom (RAL 080 70 10)



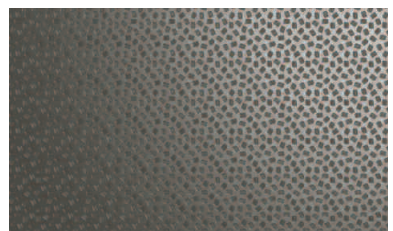
Merlin Grey (RAL 180 40 05)



Straw (RAL 080 70 30)



Ardenne (RAL 7022)

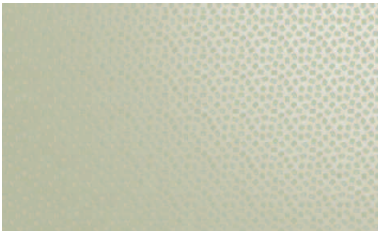


Mole Brown (RAL 070 40 10)

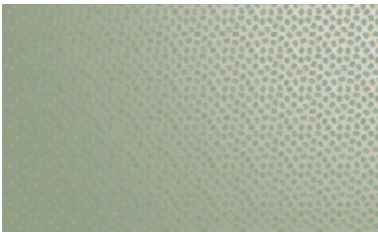
Colour reassurance



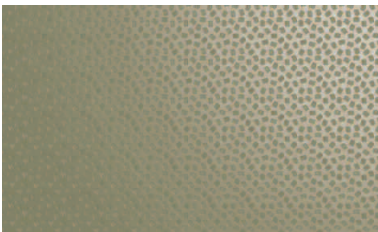
Hamlet (RAL 9002)



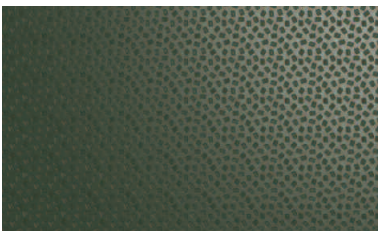
Meadowland (RAL 100 80 20)



Moorland Green (RAL 100 60 20)



Svelte Grey (RAL 080 50 20)



Olive Green (RAL 100 30 20)

Metal hand samples

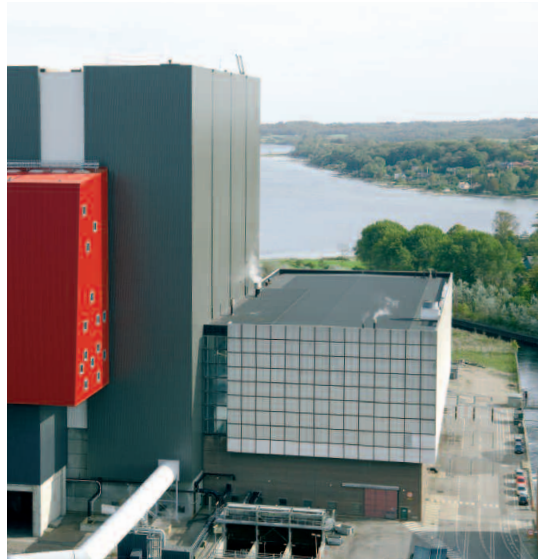
Metal hand samples are available for all colours. For a truer representation of colour and effect, please obtain metal hand samples from Tata Steel.

Colour consistency

If tonal consistency is critical, all cladding for a single elevation should come from the same production batch.

Matching components

If accessories made from other materials are to be colour-matched to the roof or wall cladding, the best reference is the actual profiles or panels delivered to site, or material from the same batch.



www.colorcoat-online.com

Trademarks of Tata Steel UK Limited

Albatross, Colorcoat, Colorcoat HPS200 Ultra, Galvalloy, Hamlet, Honesty, Meadowland, Scintilla and Svelte Grey are trademarks of Tata Steel UK Limited.

Care has been taken to ensure that the contents of this publication are accurate, but Tata Steel Europe Limited and its subsidiaries, (including Tata Steel UK Limited), do not accept responsibility or liability for errors or information that is found to be misleading. Suggestions for, or descriptions of, the end use or application of products or methods of working are for information only and Tata Steel Europe Limited and its subsidiaries accept no liability in respect thereof.

Before using products or services supplied or manufactured by Tata Steel Europe Limited and its subsidiaries, customers should satisfy themselves as to their suitability.

Whilst the Colorcoat Connection™ helpline takes care in giving out information or advice, it does so only on the basis of the facts supplied. Tata Steel Europe Limited and its subsidiaries do not accept any liability for providing inaccurate, misleading or incomplete information or advice or any reliance which may be placed on such information or advice. The recipient should satisfy itself of the accuracy and appropriateness of any information or advice before relying on it.

Sales Contact Details

Tata Steel

Shotton Works, Deeside
Flintshire CH5 2NH
United Kingdom
T: +44 (0) 1244 812345

Colorcoat Connection™ helpline

T: +44 (0) 1244 892434
E: colorcoat.connection@tatasteelurope.com

Copyright 2021 Tata Steel UK Limited, Registered Office: 18 Grosvenor Place, London, SW1X 7HS. Registered in England No. 2280000.

Language English ROW 0921